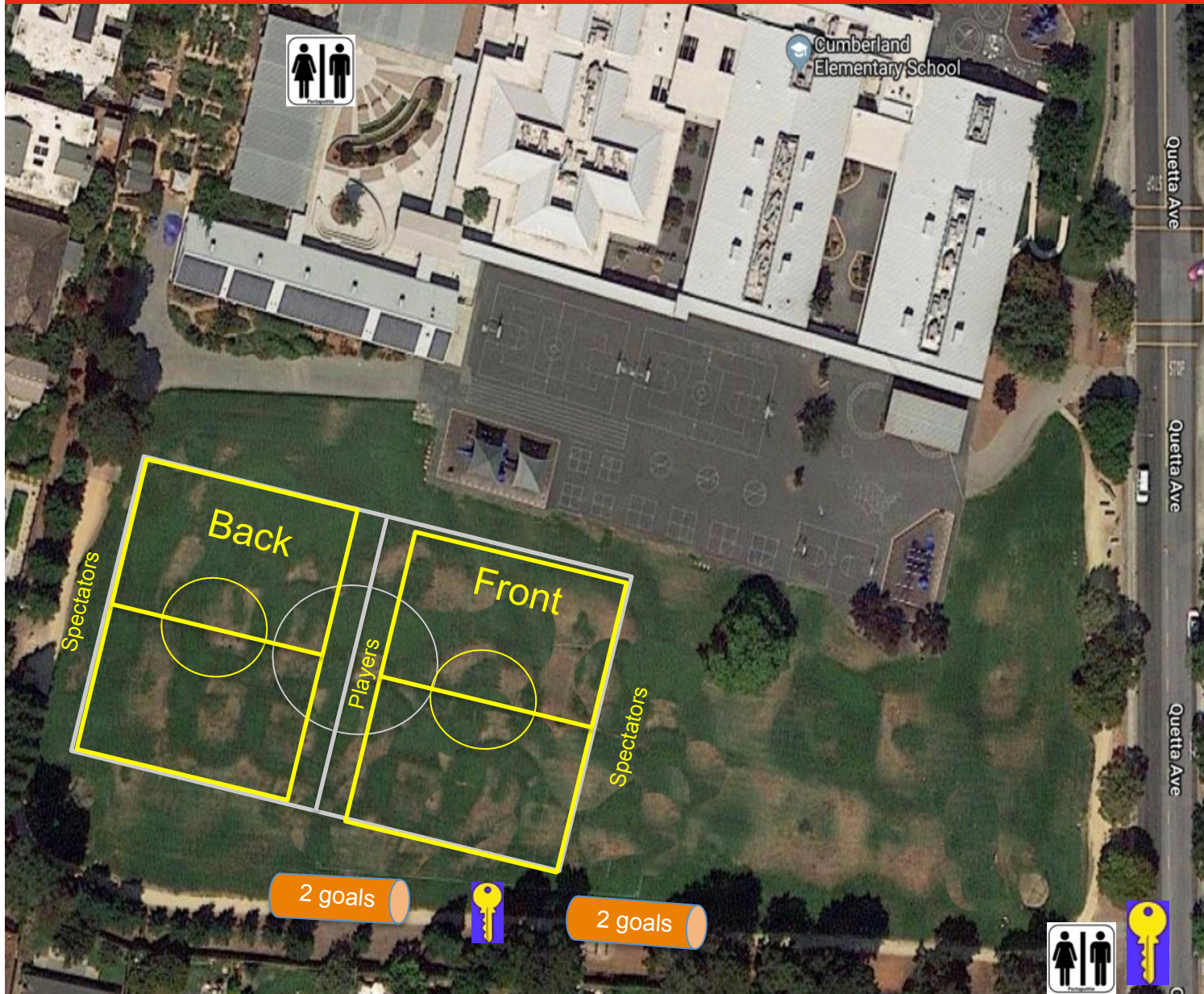


Cumberland Elementary – 10U



Notes:

- There are 2 lockboxes with keys to the goals and portapottie. One lockbox is located on the fence on Quetta Avenue near portapottie. (orange key) The second lockbox is located on the back fence between the goals. (red key) Return keys after you unlock portapottie and goals.
- The two 10U fields are in Yellow inside the big non-SASC white field.
- When putting away goals, please leave paint carts and box of paint at the front of tube.
- Last teams of the day are responsible for putting away goals, locking tubes and portapottie, and making sure keys are returned to the lockboxes.